



# East Anglia Branch Annual General Meeting

St Mary at Stoke  
IPSWICH

25<sup>th</sup> July 2021



**railfuture**

*the independent campaign for a better  
passenger and freight rail network*



# East Anglia Branch AGM 2021 – Agenda

1. Chair to welcome
2. Apologies for Absence
3. Minutes of 2020 AGM (and any matters arising not covered elsewhere)
4. Branch Report
5. National Report
6. Treasurer's Report
7. Appointment of Examiner
8. Election of Branch officers and Committee
9. Date of 2022 AGM and September 2021 meeting in Norwich
10. Discussion items and updates on local campaigns

# Minutes of East Anglia AGM 29 Feb 2020 (1)

1. *Nick Dibben, chair of East Anglia branch, welcomed members to the meeting*
2. *Apologies*
3. *Presentation by Alan Neville of Greater Anglia*
  - Bury St Edmunds – Car Park improvements. Old stationmaster’s house being made weatherproof and will then look for tenants
  - Needham Market – much more ambitious scheme than previous envisioned
  - New Stadler trains received but software issues causing problems
  - Footfall figures. Cambridge North with large growth. Cambridge just short of 12 million a year.
4. *Minutes of 2019. AGREED*
5. *Branch report given by Nick Dibben*
6. *National Update – Notice of National AGM in Birmingham and 2020 conference programme. (NB both cancelled due to pandemic)*
7. *Treasurer’s report presented by Mike Farahar. AGREED*
8. *Appointment of Examiner - Gary Venn. AGREED*

# Minutes of East Anglia AGM 29 Feb 2020 (2)

9. *Branch committee for 2020/21. AGREED unanimously by the meeting*
  - ❑ *N.Dibben (Chair), P.Wakefield, C.Burton (V.Chairs), P.Hollinghurst (Sec), M.Farahar (Treasurer), P Bayless (Membership Sec.) J.Alderson, P.Chivall, M.Cooper, I.Couzens, J.Henderson, A.Mayes, P.Smart, B.Walsh (committee)*
10. *Update on local rail issues*
  - ❑ *East West Rail (Phil Smart)*
    - *Included route announcement via Bedford, St Neots, Cambourne*
  - ❑ *Cambridge South station consultation (Peter Wakefield)*
  - ❑ *Bike + Train (Peter Wakefield)*
11. *Date of 2021 AGM 27<sup>th</sup> February (NB postponed owing to pandemic)*

# East Anglia Branch AGM 2021 cont.

## 4. Branch Report (Nick Dibben)

- Easy Stations – waiting for GA and GTR to erect plaques and hold formal presentation
- East Anglia Rail Study – paid-for consultancy, output timed for 50<sup>th</sup> anniversary of branch
- RAIL EAST newsletter – highly-valued publication; sent to 300+ outside Railfuture
- Post-COVID railway – leisure travel looks very robust

## 5. National Report (Jerry Alderson)

- Railfuture was able to carry on almost as normal during lockdown (it is naturally a work from home organisation) and “back to normal” now that COVID-19 restrictions have ended

## 6. Treasurer’s Report (Mike Farahar)

## 7. Appointment of Examiner

- No longer needed as branch accounts managed at national level – use national examiner

## 8. Election of Branch officers and Committee

## 9. Date of 2022 AGM and September 2021 meeting in Norwich

## 10. Discussion items and updates on local campaigns

# 8. Railfuture East Anglia Committee 2020/21

*Current committee until this  
AGM – all willing to stand again*

## **Officers**

Chair	Nick Dibben
Vice Chair	Chris Burton
Vice Chair	Peter Wakefield
Secretary	Paul Hollinghurst
Treasurer	Mike Farahar

*[All were re-appointed]*

## **Others**

	Jerry Alderson
“	Peter Chivall
“	Peter Bayless
“	Martin Cooper
“	Ian Couzens
“	John Henderson
“	Alan Mayes
“	Phil Smart
“	Ben Walsh

# 9. Next East Anglia Branch Meeting

**25<sup>th</sup> September 2021 at 14:00**

Friends Meeting House

5 Upper Goat Lane

**Norwich NR2 1EW**



A speaker from the Sub-National Transport Body (Transport East – covering Norfolk, Suffolk and Essex) will be invited

Flier (with map): [www.railfuture.org.uk/east/meetings/](http://www.railfuture.org.uk/east/meetings/)

# 9. Date of 2022 AGM

**Saturday 26<sup>th</sup> February at 14:00**

Friends Meeting House

St John's Street

Bury St. Edmunds IP33 1SJ



Details: [www.railfuture.org.uk/East+Anglia+Meetings+and+Events](http://www.railfuture.org.uk/East+Anglia+Meetings+and+Events)



# Agenda cont.

## 10. Discussion on East Anglia Rail Campaigns

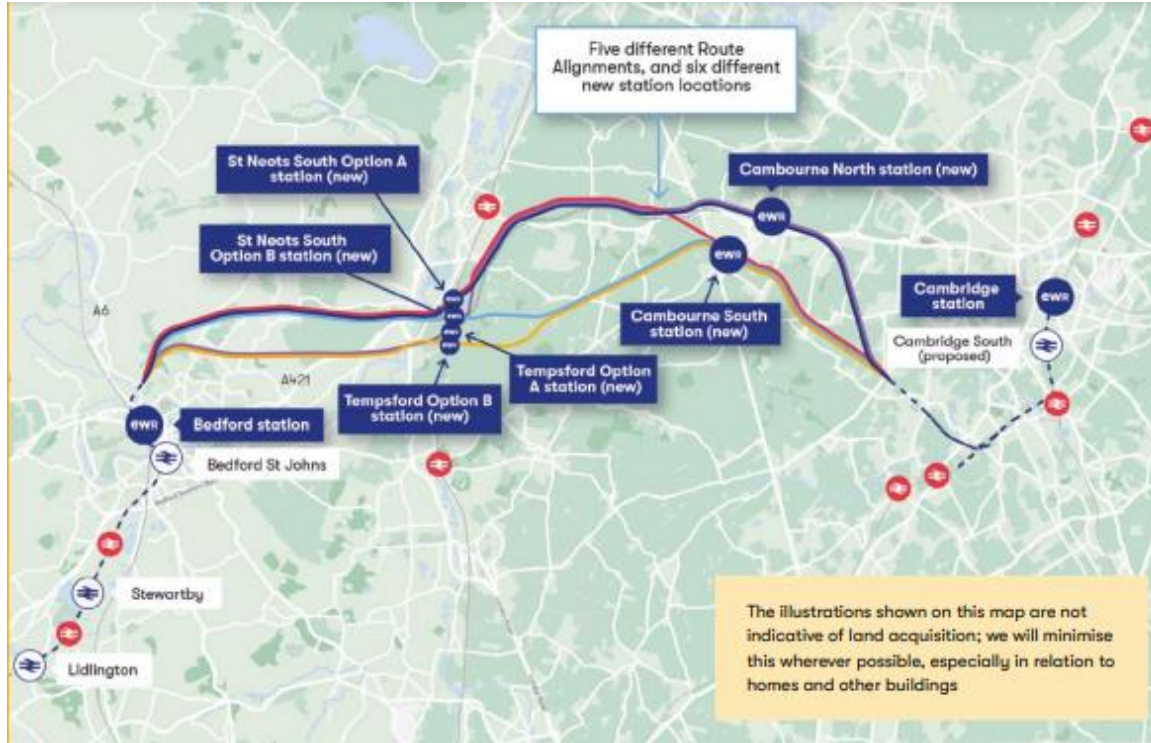
- East West Rail Consultation and Cambridge South TWA
- Ely Area Capacity Enhancements Consultation
- Soham station
- Wisbech line re-opening
- Haverhill line re-opening
- Long Stratton proposed station
- Timetable Consultations
- Station Improvements



## East – West Rail

- Bicester – Bletchley works underway
- Work started on Winslow Station
- Bletchley flyover works and new high-level platform

# East-West Rail – (Oxford) Bedford to Cambridge Consultation spring 2021



East West Rail Company's map shows possible routes, all entering Cambridge from the south for maximum connectivity beyond Cambridge

# East-West Rail - Oxford to Cambridge (1)

## Key features

- Four trains per hour across the route
- Relocate intermediate stations between Bletchley and Bedford
  - Replace 10 low-quality stations with five superior stations closer to settlements
  - Railfuture supports this in principle – might argue for six rather than five
- Bedford station building relocation - segregated track on route to north
- New interchange station with east coast route (near St Neots)
- Cambourne (becoming a major settlement) will have a station
- Enter Cambridge from the south – for maximum connectivity
- No electrification currently planned
  - Near universal condemnation of this decision

## East-West Rail - Oxford to Cambridge (2)

Railfuture submitted combined response after feedback from branches on the route

- Supportive of alignment (especially south into Cambridge)
- Concern over lack of electrification
- Railfuture article in Cambridge Independent newspaper

Railfuture has been talking to local politicians around Cambridge

Need to be aware of local concerns

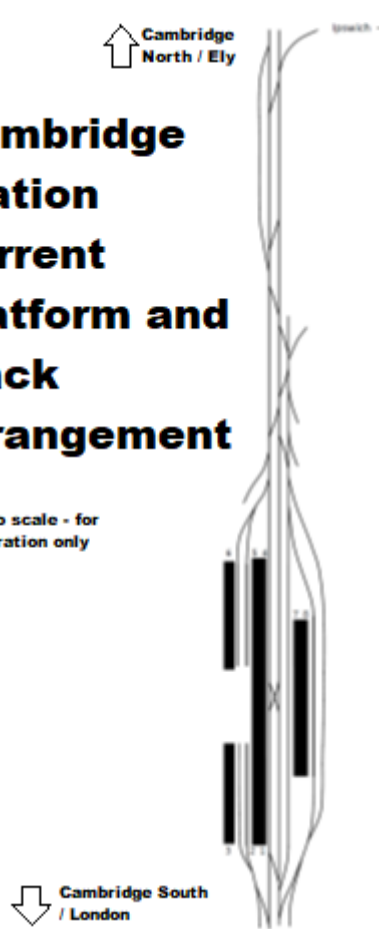


## East West Rail and Cambridge (central) station

Railfuture suggested track plan to extend existing platforms and add cross-overs. This will avoid removing the existing carriage sidings and also provides four tracks to Coldham's Lane Junction (for the Newmarket route)

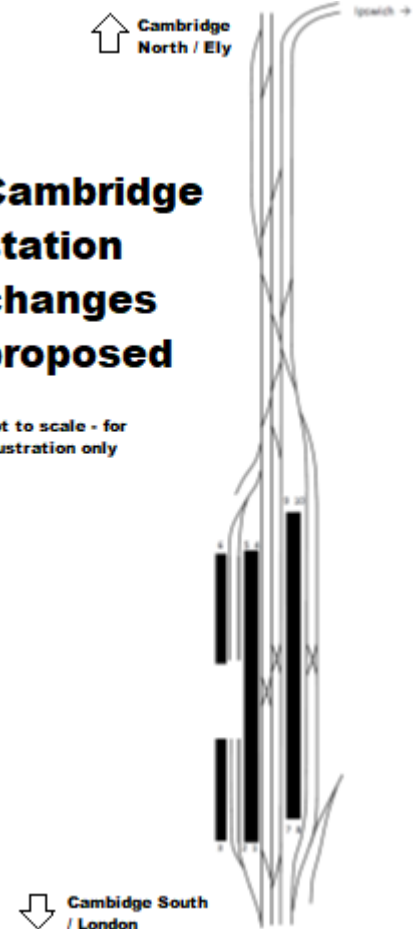
### Cambridge station current platform and track arrangement

Not to scale - for illustration only



### Cambridge station changes proposed

Not to scale - for illustration only



## East West Rail and Cambridge South station

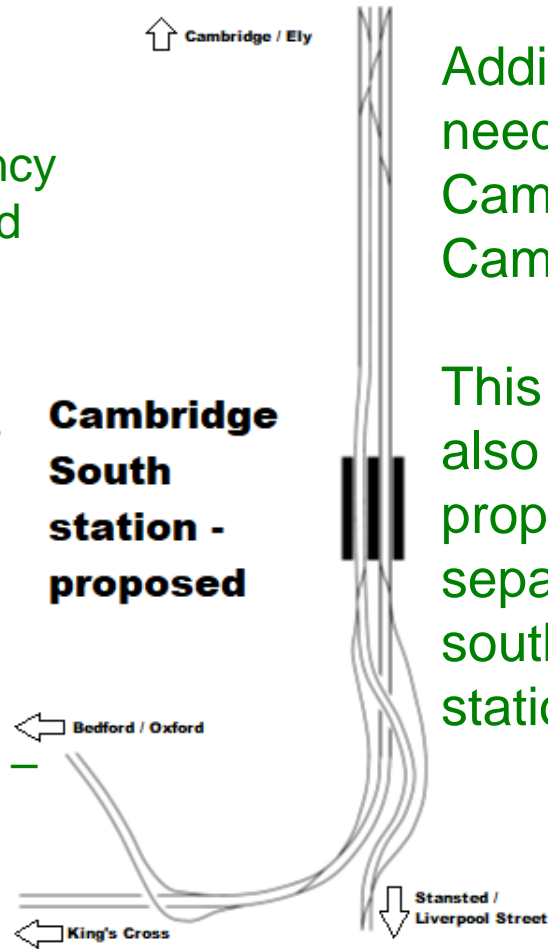
Northern entrance/exit plus emergency exit at southern end – Railfuture would like entrance at south as well

Four platforms – two outer and one island (full-length canopy and two lifts per platform promised as Railfuture requested)

Railfuture preferred two islands for cross-platform interchange

Initial simple loops off the new station – ignores East-West rail

£183m cost – TWA submitted



Additional tracks needed from Cambridge station to Cambridge South.

This Railfuture map also shows its proposal for a grade-separated junction south of the new station

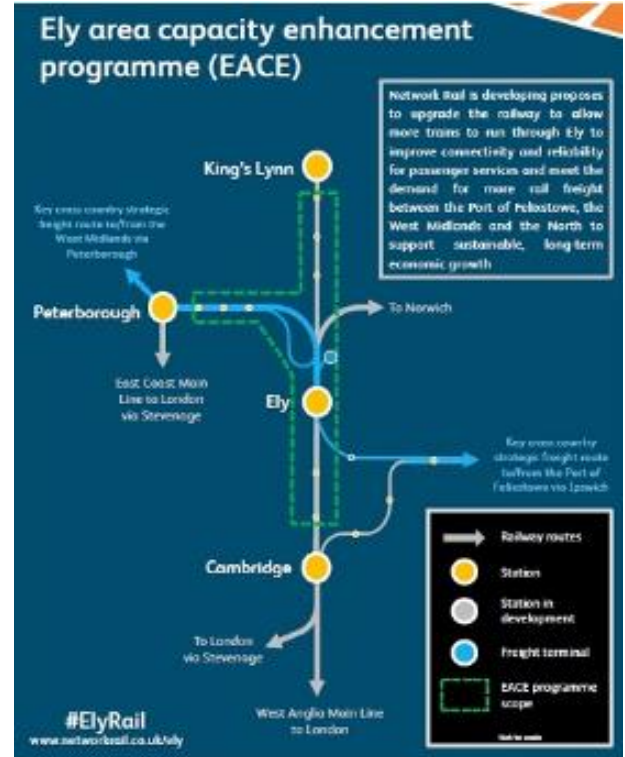
# Ely Area Capacity Study

## Network Rail second consultation

- Only covered southern (Ely station) end

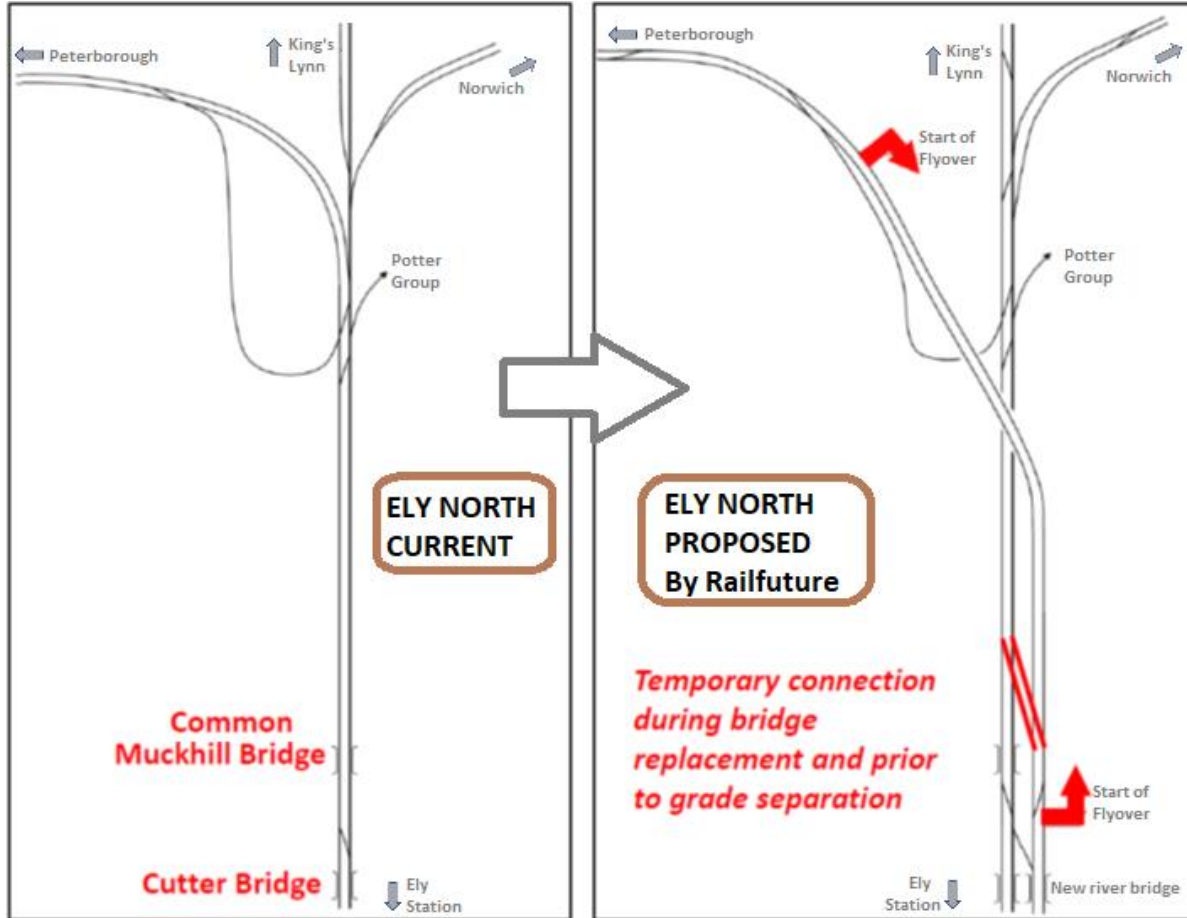
## Railfuture Response

- Not ambitious enough
- Need four tracks north of Ely
  - Would help with bridge replacement
  - Provides required extra capacity
  - Need flying junction at Ely North
- Impact on Soham and Wisbech schemes
- See [www.railfuture.org.uk/display2728](http://www.railfuture.org.uk/display2728)

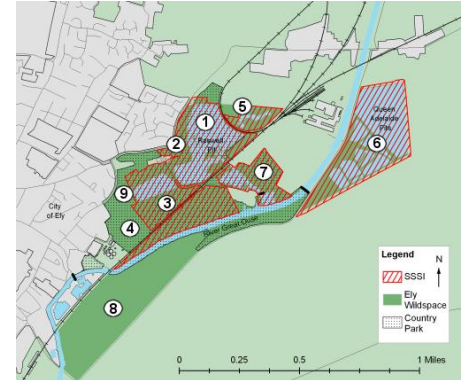




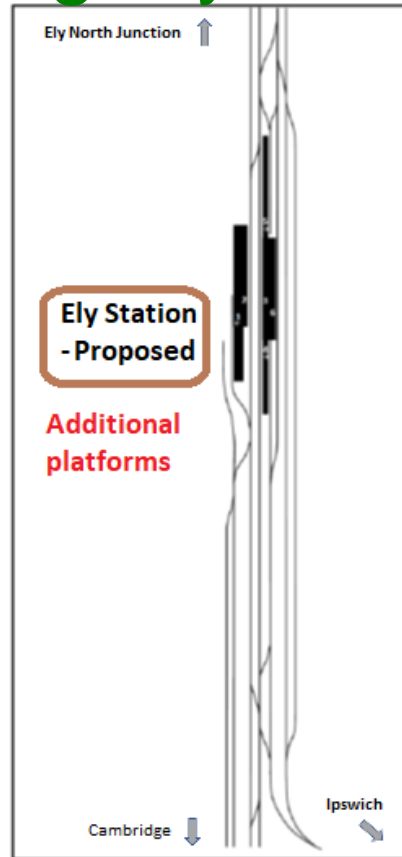
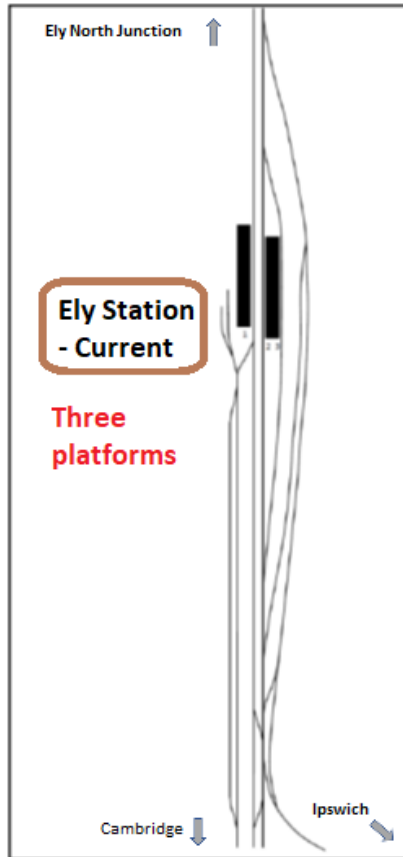
# Ely North Junction layout - current and Railfuture proposal



Railfuture's suggested track plan to increase capacity and enable construction whilst reducing disruption. Need to be aware of local SSSI and County wildlife sites

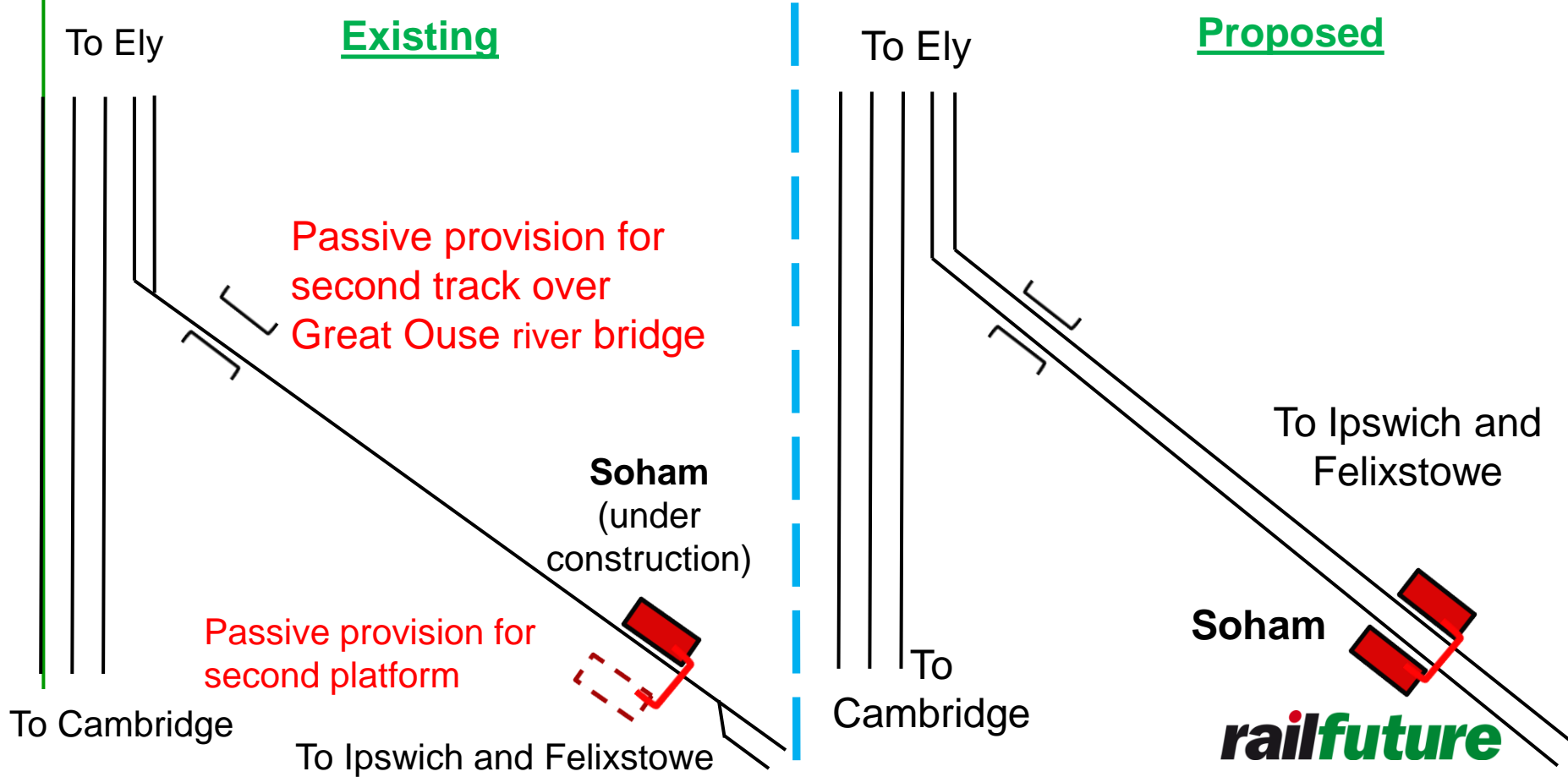


# Re-modelling Ely station



Centre and right maps show Railfuture's proposed options to provide additional platforms

# Soham to Ely – Railfuture double-tracking proposal



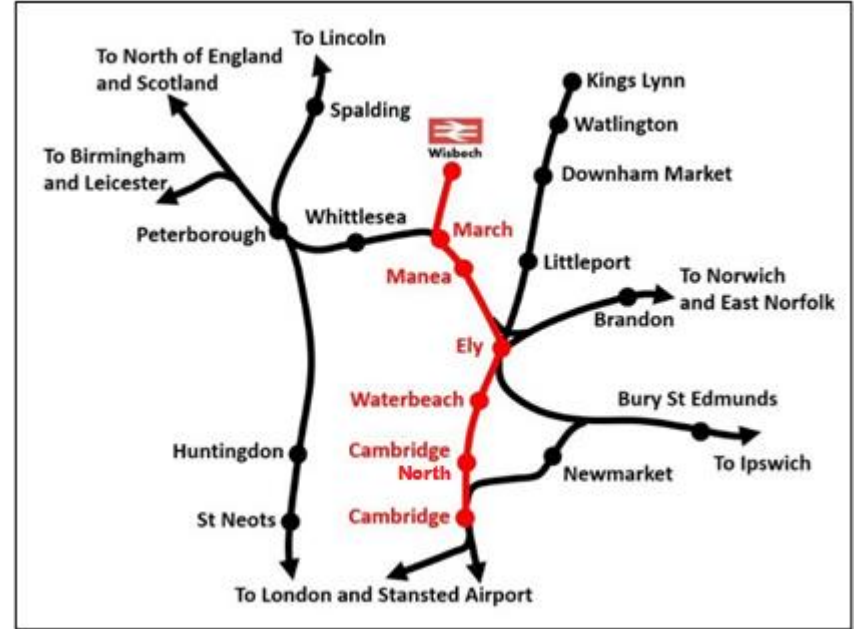
# Soham Station

- Construction underway
- Platform installed
- Footbridge being assembled in July
- Handover of completed station expected in September 2021
- Due to open December 2021



# Wisbech line re-opening

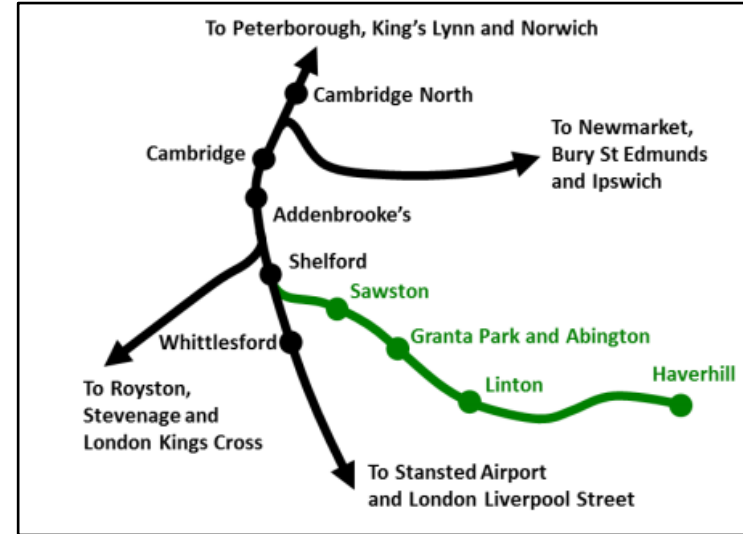
- Business case Dec 2020
- Detailed consultation due 2021
- Could start work 2023
- Possible opening in 2026
  - as a shuttle service to March
- Cambridge service by 2028



Railfuture map

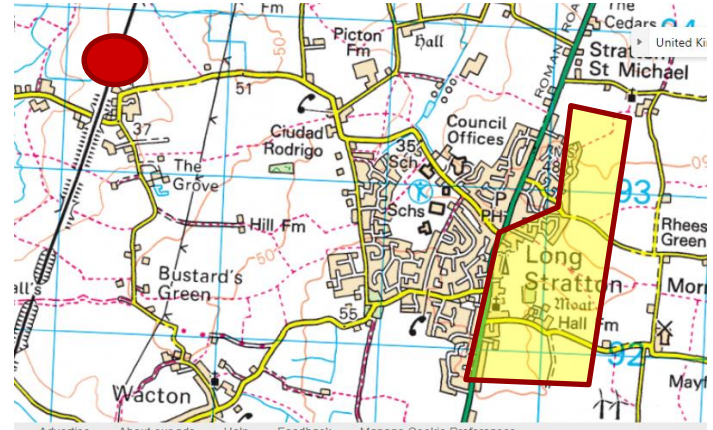
# Haverhill line re-opening

- Railfuture 'Restoring Your Railway' (RYR) bid submitted
- Local MP support
- Announcement soon
- Railfuture and others concerned over SE Cambs busway and P&R scheme – harms public transport



# Long Stratton Station

- Railfuture produced a report on new station south of Norwich
- Report sent to local councillors
- Meetings with local authorities
- Station supports new housing
- Depends on 3rd London-Norwich service



# Timetable changes consultations

- Greater Anglia
  - Railfuture meeting with GA team
  - Issues regarding connections and constraints
  - Through services has been promised (e.g. Lowestoft-London)
  - Hourly Ipswich–Peterborough had been promised
    - Railfuture proposed Ipswich-Ely on alternate hour to service new Soham station
- GTR
  - Railfuture is generally happy with proposals
- LNER
  - Concern over connections at Peterborough
  - Stopping patterns
  - Coordination between train operators is needed



# Station Improvements

- Station access for all
  - Schemes at Biggleswade, Bury St Edmunds, Colchester and Needham Market
  - Proposal to improve Stowmarket
- Station improvements at many stations
  - Car parking, cycle racks, new shelters, station gardens

# Join Railfuture

- A voice for rail users and rail supporters
- Campaigning for a bigger, better railway
- Apply to join Railfuture today via the website
  - [www.railfuture.org.uk/join/](http://www.railfuture.org.uk/join/) - £20 per year (£14 for under 26s)
  - Pay using credit/debit card or PayPal account using the PayPal website
  - You will receive quarterly national Railwatch magazine and branch newsletter
- Follow Railfuture on social media (@Railfuture)