



Network Rail Station Route Utilisation Study

An Overview

by Nick Dibben

Railfuture East Anglia branch

Ipswich Meeting, Saturday 25th June 2011

Network Rail Station RUS

- Looking at Station Congestion
- Identifying stations where congestion occurs
- Future trends and usage
- Developing a toolkit of solutions



Top London station usage

- 1: London Waterloo – 91.9m users /year
- 2: London Victoria – 75.3m
- 3: London Bridge – 55.8m
- 4: London Liverpool Street – 53.4m
- ...
- 9: London King's Cross – 27.6m
- 16: Stratford – 13.8m
- 19: Finsbury Park – 9.1m

Top Non-London station usage

1: Birmingham New Street – 29.2m

2: Leeds – 23.9m

3: Manchester Piccadilly – 21.8m

4: Liverpool Central – 18.8m

...

East Anglia branch stations:

13: Cambridge – 8.2m

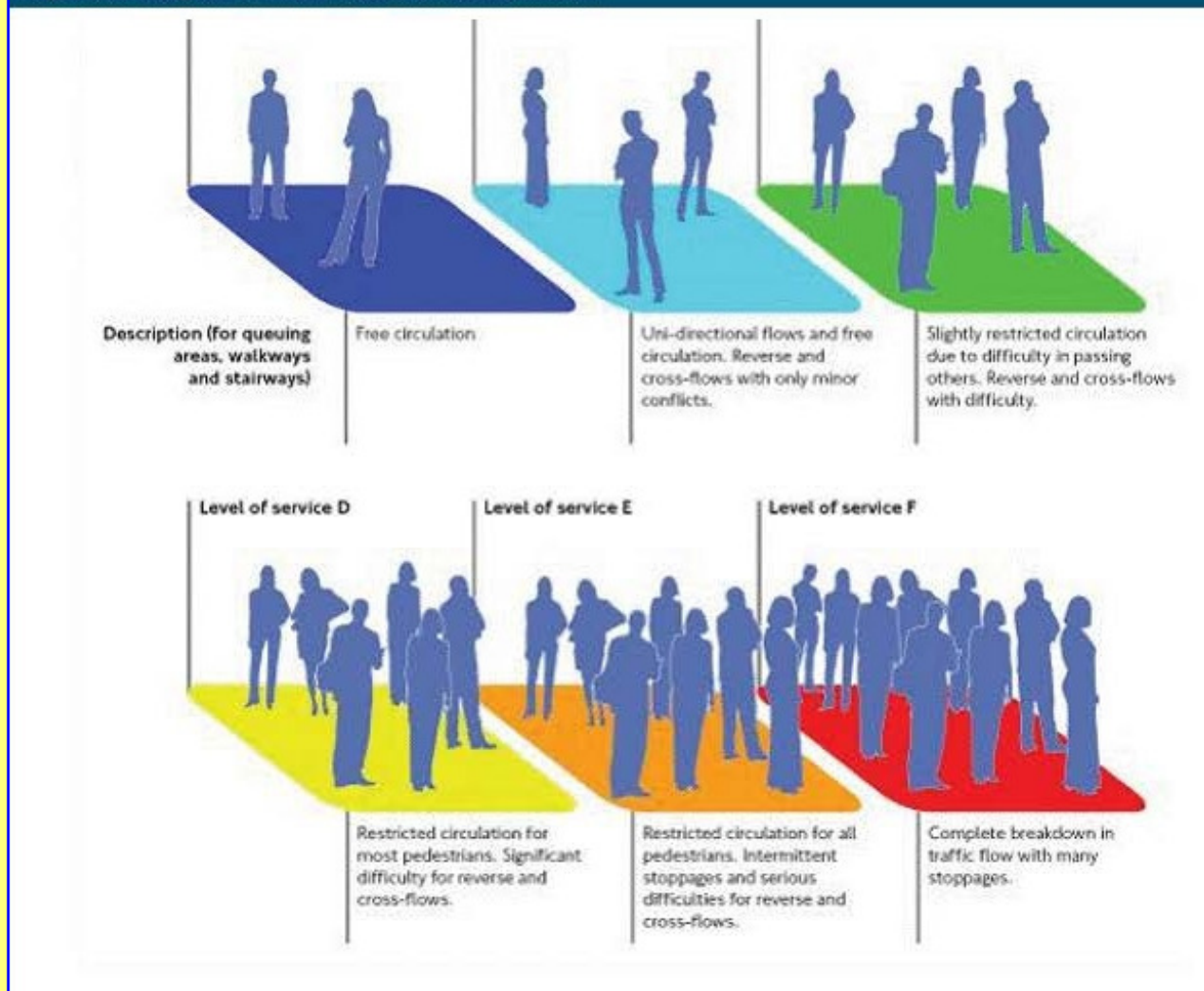
16: Chelmsford – 7.0m

How many station users are there?

- NR lacks full information
- Need to include non-users
 - People seeking information / advanced tickets
 - People meeting rail users
 - People passing through
- How long do people stay at a station?
 - Average 30 minutes at main stations

What is congestion?

Figure 3.1 Diagram of Fruin Levels of Service A to F²



Fruin Level

A – least congested
(top left)

F – most congested
(bottom right)

Possible Congestion areas

- Access into station
- Ticket office
- Ticket gates
- Information points
- Doorways, stairs
- Lifts and escalators
- Platforms

Local station congestion spots 2010

Station	Time	Concourse	Access to Platform	Platform
Cambridge	Peak	C		A
Tottenham Hale	Off-Peak	C	D	B
Chelmsford	Peak	C	B	B
Colchester N	Peak	C	A	A
Finsbury Park	Peak	D	D	D
King's Cross	Peak	C		D
Liverpool St	Peak	E	D	E
Peterborough	Peak	E	D	E
Stratford	Peak	B	B	B
Witham	Peak	C	D	D

A=Lowest F=Highest

Network Rail's Solutions Toolkit

Range of solutions for each station:

- Remove clutter
- Relocate facilities to less congested area
- One-way system for movement
- Improved signage
- Passenger / staff training for ticket machines
- Additional access points
- Wider / additional platforms

Network Rail's Station RUS

Draft issued by Network Rail on 6th May 2011

- 112 pages plus a 78-page Appendix
- Consultation period of 60 days - to 8th July 2011
- See www.networkrail.co.uk
 - Corporate documents
 - Route Utilisation Strategies (RUSs)

East Anglia branch response will feed into *Railfuture's* single national response.

These slides are on: www.railfuture.org.uk/east.html.