



East Anglia Branch December Meeting

Little St. Mary's Church Hall
Trumpington Street, Cambridge

7th December 2019

Join Railfuture for £20 a year (£14 for under 26s)

www.railfuture.org.uk/join

Train Operator Guest (1)

Alan Neville

Greater Anglia

Community and Customer Engagement Manager

incl. managing station adopter activities

(part of Corporate Affairs team)



greateranglia

Alan explained his role, his 40-year career on the railway, and gave the latest news on the roll-out of GA's new trains plus latest punctuality figures

Train Operator Guest (2)

Andrew Chillingsworth

Great Northern (GTR)

Community Engagement Officer



Andrew explained his role, which he had recently started, and provided a brief update on Great Northern's service

Railfuture – East Stations

■ Easy Stations - Results of surveys

- Category 1 Staffed stations with 1m+ passengers/year
 - **Audley End** [Greater Anglia]
- Category 2 Staffed Stations with 150k passengers/year
 - **King's Lynn** [Great Northern]
 - **Sandy** [Great Northern]
- Category 3 Unstaffed Stations
 - **Wickham Market** (Campsea Ash) [Greater Anglia]

20-page report on Railfuture website

<https://www.railfuture.org.uk/east/docs/Railfuture-East-Anglia-2019-11-26-Easy-Stations-Report-incl-2019-winners.pdf>

Railfuture – East Stations

■ Copies of the report presented to train operators



- Andrew Chillingsworth, Great Northern (left)
- Alan Neville, Greater Anglia (right)
- Nick Dibben, Railfuture East Anglia branch chair (centre)

Q&A to Train Operators

Alan Neville

greateranglia

Community and Customer Engagement Manager

incl. managing station adopter activities

(part of Corporate Affairs team)

Andrew Chillingsworth

Great Northern

Community Engagement Officer

Both answered a variety of questions from the audience of 40+ people, including problems on-board trains, long gaps between trains, Huntingdon buffet still closed after three years, lack of printed timetables, what they are doing to attract more passengers

Thank you to Train Operators

Copies of Railfuture's book **Britain's Growing Railway** were presented to the two train operator representatives



- Andrew Chillingsworth, Great Northern (left)
- Alan Neville, Greater Anglia (right)

Railfuture East Anglia branch activities and local rail news

Nick Dibben

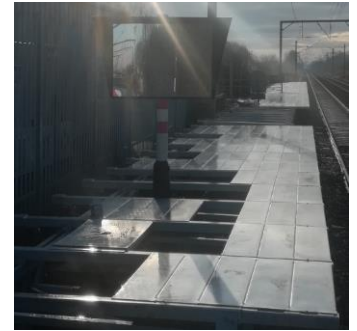
Railfuture East Anglia Branch Chair

Railfuture Report - Updates

■ Progress on Railfuture campaigns

□ Eight-car trains on Cambridge to King's Lynn

- Good progress at Waterbeach (photo) and Littleport stations
- Photos of Littleport work in RAIL EAST issue 183 (Nov 2019)



□ Cambridge South

- Railfuture meeting with Network Rail's station sponsor on w/c 16 December

□ Wisbech reopening

- Through services to Cambridge require Ely North Junction to be upgraded, which Railfuture will be campaigning heavily on in 2020

□ Election Purdah

- Prevented various announcements (e.g. East West Rail [TWA Order for western section phase 2 and preferred Bedford-Cambridge route])

Guest Speaker

Colin Harris

Cambridge Connect



www.cambridge-connect.uk

Colin Harris gave a PowerPoint presentation comprising a detailed comparison of the **Cambridgeshire Light Rail (CLR)** tram network, proposed by **Cambridge Connect**, versus the Cambridgeshire Autonomous Metro (CAM) bus network currently in favour with the Combined Authority.

Both had similar transport routes and included tunnels in the centre of Cambridge, and had a similar capital cost. But the professional analysis conducted by respected consultancy companies concluded that the tram system was proven and low risk whereas the autonomous bus system was largely unproven and much higher risk, also being far less attractive to investors.

He said that Cambridge Connect wanted to work with the Combined Authority to help it deliver the tram system.

Railfuture diary 2020

- Dates of future East Anglia branch meetings
 - **29th February 2020** – AGM Bury St Edmunds
 - 14:00 – at Friends Meeting House, St. John's Street
 - **20th June 2020** – Ipswich
 - 14:00 – at St Mary at Stoke
 - **26th September 2020** – Norwich
 - **5th December 2020** – Cambridge
- RAIL EAST 185 – Contributions by 24th January 2020
- Railfuture National Events
 - Railfuture Ltd AGM - 27th June 2020 – Birmingham
 - Railfuture Autumn Conference 2020 - Date/location TBC