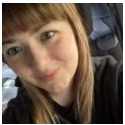


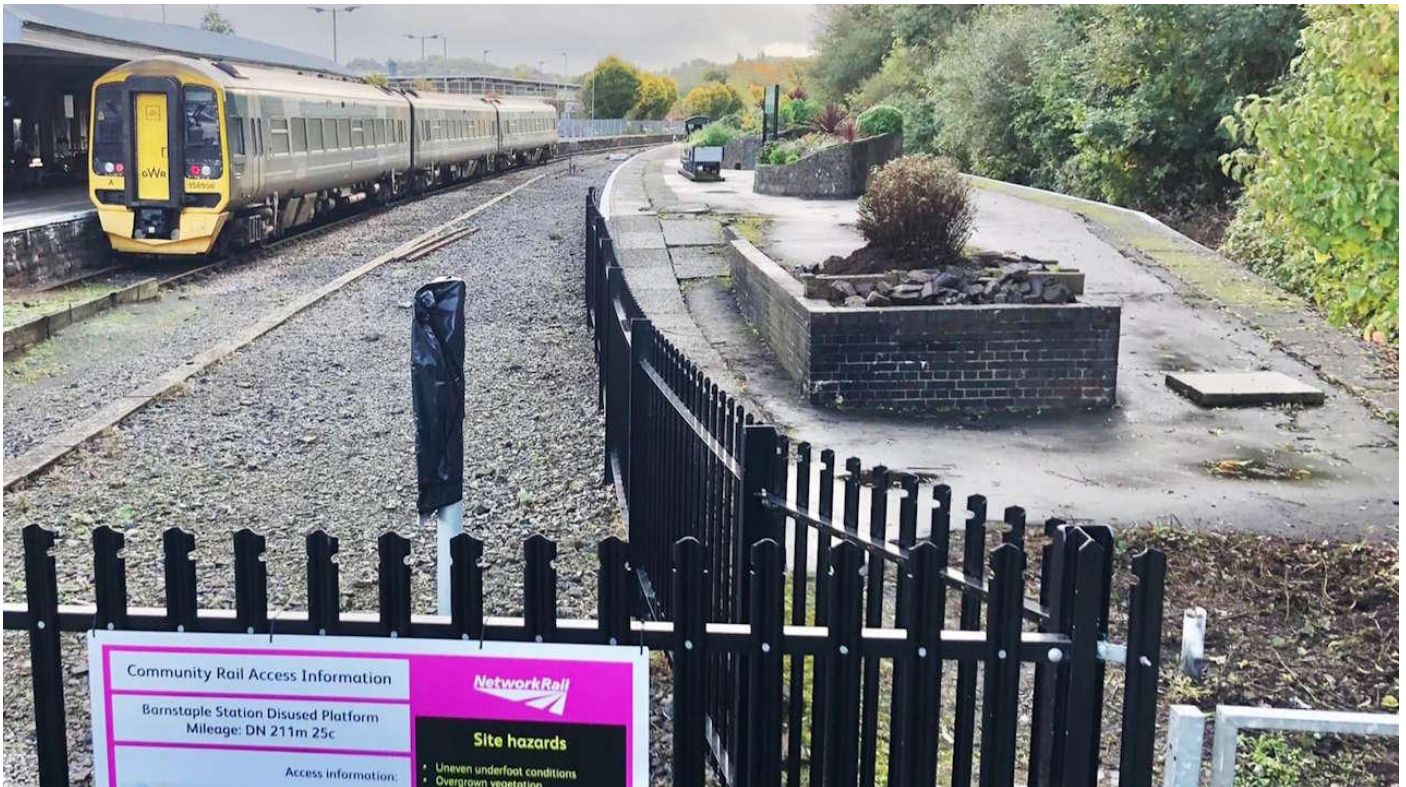


£2,500 Grant Allows Biodiversity Work at Barnstaple Railway Station



[Victoria Thompson](#)

Last updated: 25th May, 2025 at 9:50 am



Barnstaple station planters // Credit: Great Western Railway

Train operator Great Western Railway has provided a grant of £2,500 to enhance Barnstaple railway station.

Friends of Barnstaple Station applied through the Customer and Community Improvement Fund.

Great Western Railway launched the fund back in January, which helps to support local communities. As part of their National Rail contract with the Department for Transport, Great Western Railway has committed to supporting communities, schools, councils and non-profit organisations.



Barnstaple station planters // Credit: Great Western Railway

Friends of Barnstaple Station will be using the grant to design history boards which highlight the station's 170 years.

A local Men's Shed, which is a community space for men to create and connect, will be creating new planters that look like railway wagons and will make a bug house which looks like a signal box.

They also plan to repair the existing planters to help improve biodiversity. Each planter will see different flowers planted by station volunteers, which they plan to finish by the end of August.

"We're extremely grateful for this funding from Great Western Railway, which will help to enhance the station's environment for all rail users as well as create history boards to tell community groups about the station's history.

"Barnstaple station is the terminus for GWR customers who join the North Devon line, and it continues to steadily grow in usage. Enhancing the station will attract new customers to the rail network as well as help keep up the Friends Of Barnstaple Railway Station's award-winning work.

"The island platform is going to be a focal point for many photos, what an incredible first and last impression it will create."

Friends Of Barnstaple Railway Station Chair Tim Steer