



Cambridge South Station



Railfuture East Anglia
Saturday 2 December

Overview



We are building a new station at Cambridge South

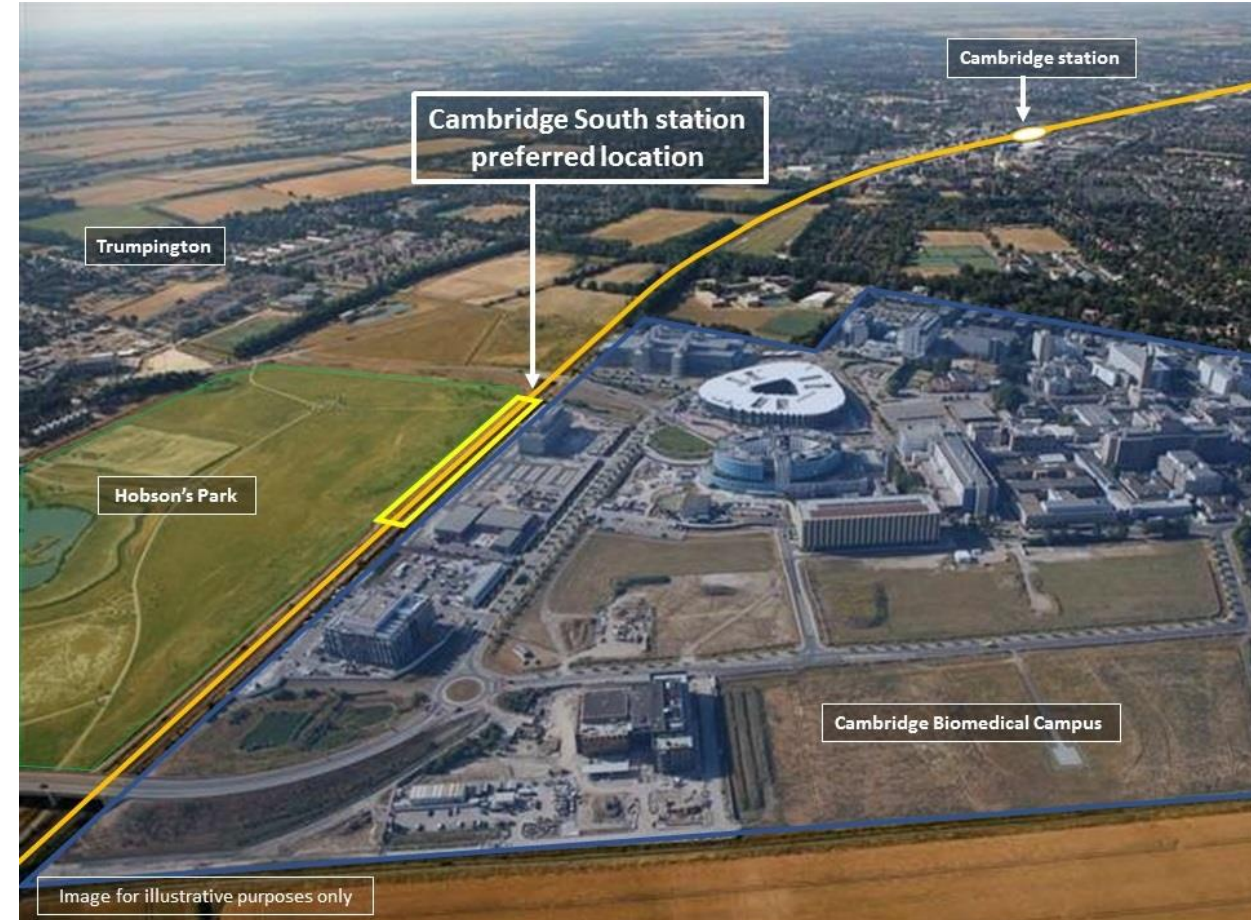
This will be next the Cambridge Biomedical Campus & Addenbrooke's

Connexions to central London, London Stansted Airport and Birmingham.

The station will be managed and served by Greater Anglia, with other existing train operators expected to call at the new station.

Why a new station?

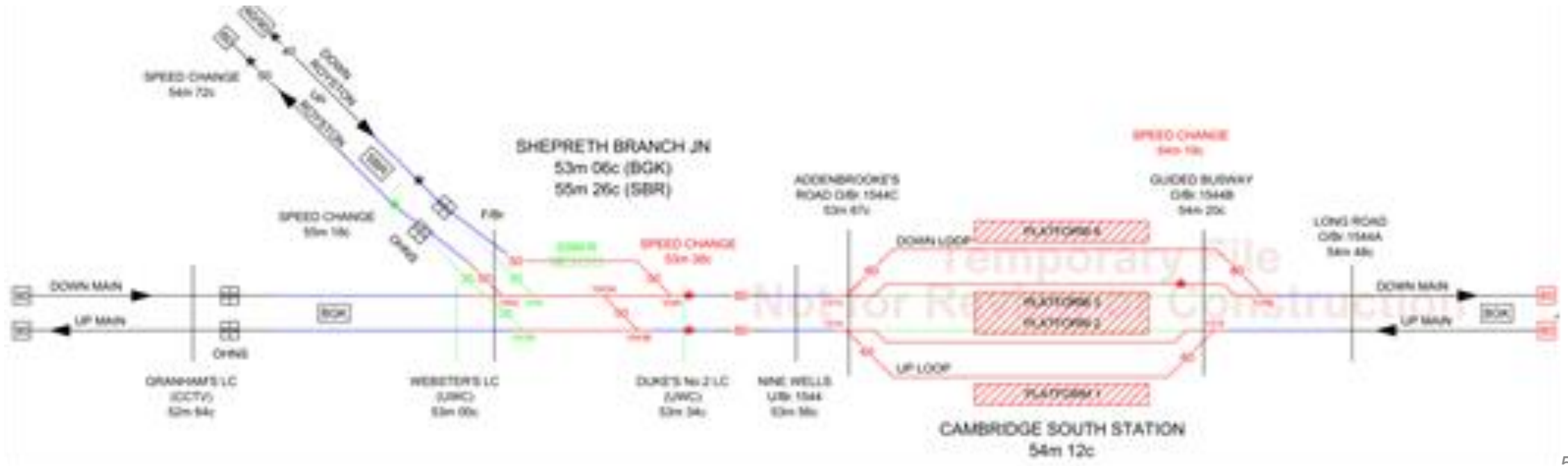
- To support the Cambridge Biomedical Campus, an internationally significant health and life sciences cluster
- To provide access to the 27,000 jobs & estimated 4,000 dwellings here by 2031
- To relieve pressure on Cambridge Station
- To relieve congestion in the local area and improve connectivity by supporting the development of environmentally sustainable transport in Cambridge



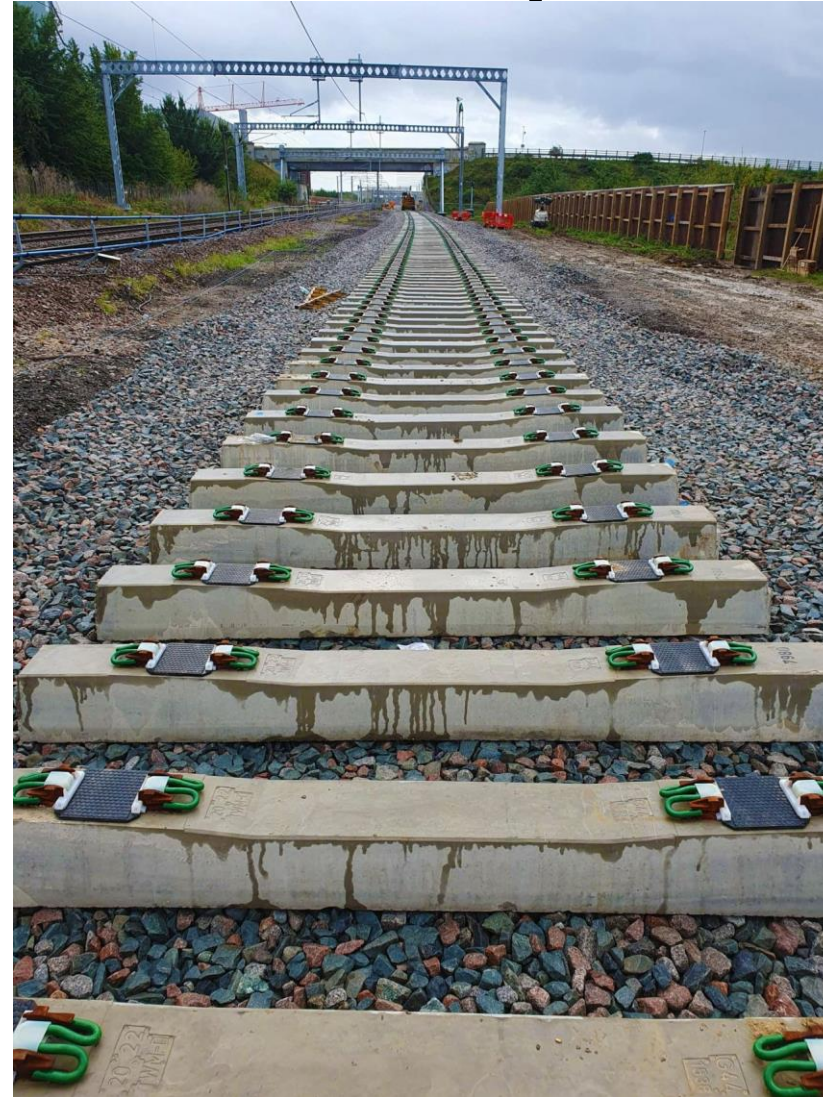
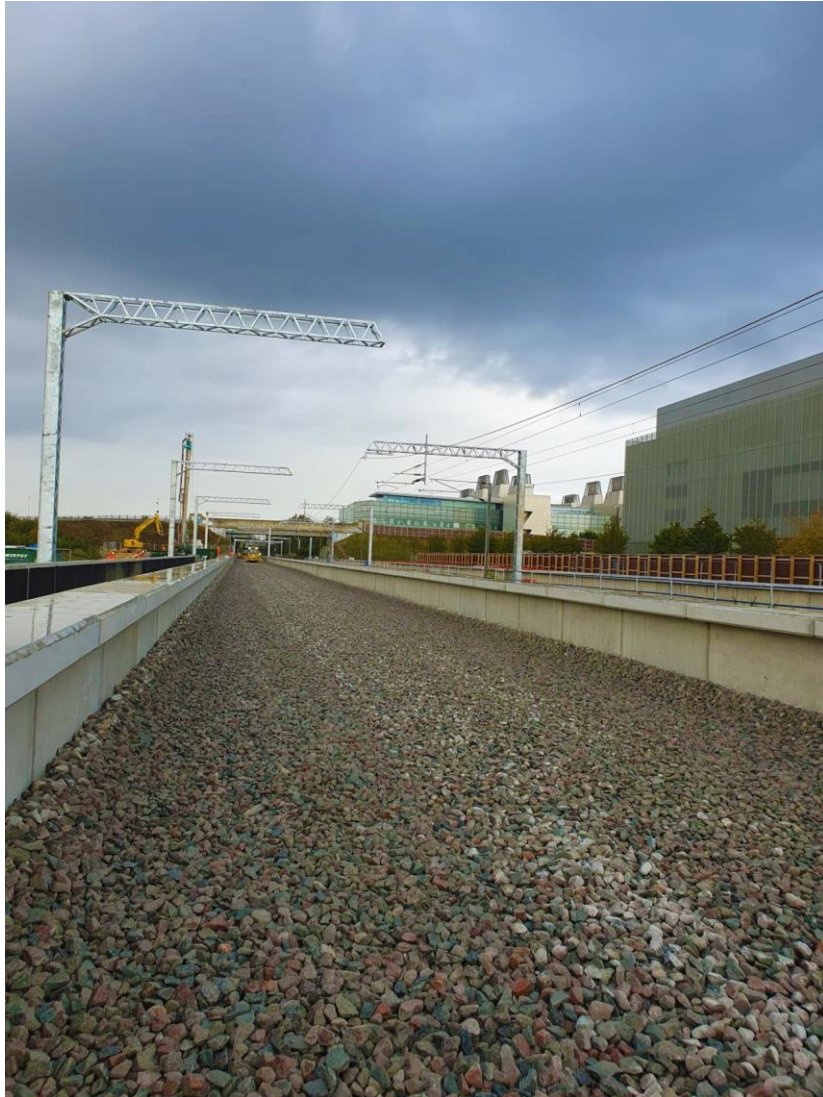


Works on the railway

- Remodelling of the existing track layout
- Installing two additional track loops
- Enhancements to Shepreth branch junction
- Changes to the southern approach to Cambridge station
- Renewal of overhead line electrification and a substation
- Modification of existing signalling equipment
- Closure of two private level crossing and provision of alternative access



What we have done so far – pictures



Upcoming works

December 2023: Piling, foundation work and first steel work for the western station building

Christmas 2023: Total line closure for track slew at Shepreth Branch Jn

January 2024: East station building piling

Spring 2024: Roof, glazing, and fit out for the western station building

Summer 2024: Roof, glazing, and fit out for the eastern station building

Autumn – Winter 2024: Footbridge installation

Throughout 2024: Rail systems upgrades including the two new loop lines, remodelling of existing track, signalling & telecoms changes and renewal of the catenary



Any
questions?

