

Navantia UK Appledore Business

Northern Devon Railway Development Alliance

March 2025



INFORMACIÓN CLASIFICADA POR NAVANTIA

CONFIDENCIAL NAVANTIA

ESTE DOCUMENTO Y LA INFORMACIÓN QUE CONTIENE SON PROPIEDAD DE NAVANTIA. NO PUEDE SER REPRODUCIDO PARCIAL O TOTALMENTE NI DIVULGADO A TERCEROS SIN AUTORIZACIÓN ESCRITA DE NAVANTIA. UNA VEZ FINALIZADA LA RAZÓN DE SU TRANSFERENCIA, DEBERÁ SER DEVUELTO A NAVANTIA.

NAVANTIA CONFIDENTIAL

THIS DOCUMENT AND THE INFORMATION HEREIN IS PROPERTY OF NAVANTIA. IT CANNOT BE PARTIALLY OR TOTALLY REPRODUCED NOR DISCLOSED TO THIRD PARTIES WITHOUT WRITTEN PERMISSION FROM NAVANTIA. ONCE THE REASON FOR WHICH IT WAS TRANSFERRED IS OVER, IT MUST BE RETURNED TO NAVANTIA.

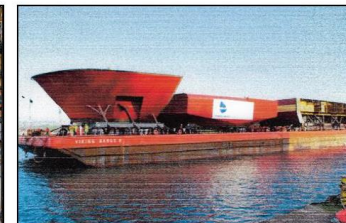
NUK - Appledore



Our Past

Appledore shipyard was founded in 1855 and has a rich history of shipbuilding. Located in Appledore North Devon, the site features excellent facilities to cater for a wide range of marine engineering services, ship building and ship repair.

The H&W (Appledore) facility is situated over two locations, the Bidna dry dock facility and the Newquay outfitting quay. The site is 322,975 sq feet on 28.84 acres. The facilities also include technical office space, amenities and ship side offices with 24-hour site security.

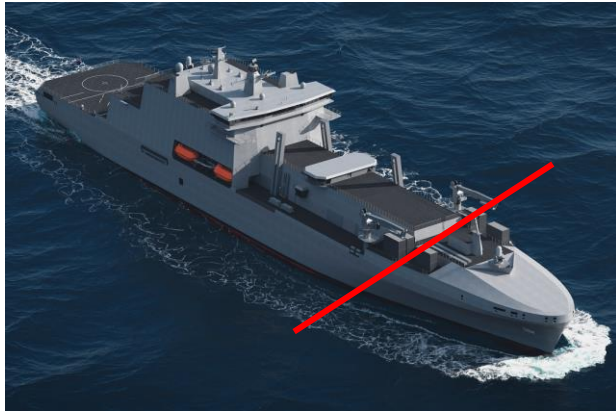


The Future for North Devon

Appledore Shipyard:

Current Headcount - 180
People

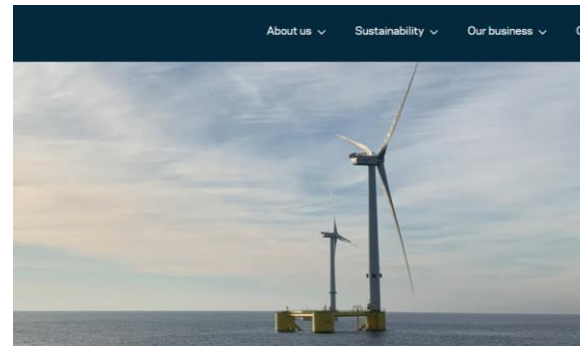
By 2026 - 262 Full-time (+82)
+50 contractors



Fleet Solid Support

Floating Offshore Wind

5000+ Jobs Predicted by 2050



Supply chain for Celtic Sea floating wind farms
could power 5,000 new jobs and a £1.4bn
boost for the economy

Marine Thursday 22 February 2024



Up to 5,300 new jobs and up to £1.4 billion could be generated for the UK economy by galvanising the supply chain and infrastructure opportunities arising from the development of new floating wind farms off the coast of South Wales and the South West England, according to new research commissioned by The Crown Estate.

X-Links

600+ Jobs in Bideford
and surrounding Areas



Appledore Clean Maritime Innovation Centre

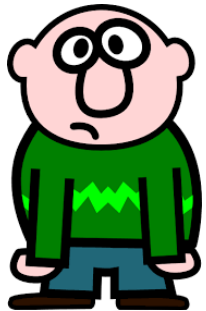


Why We Need Better Transport

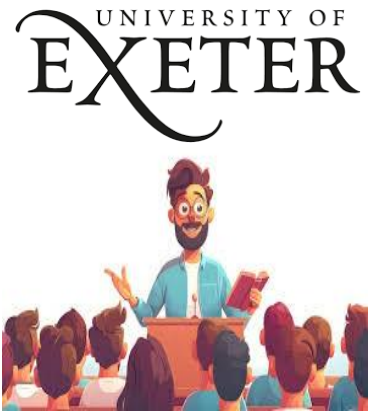


MONDAYS TO FRIDAYS except Bank Holidays

	21	21	21A	21	21	21A
Barnstaple Bus Station	0555	0630	0705	0720	0740	0800
Barnstaple Railway Station	0559	0634	0709	0724	0744	0804
Bickington Garage	0604	0639	0716	0731	0751	0811
Fremington Taw View	0607	0642	0719	0734	0754	0814
Yelland Rectory Lane	0613	0648	0726	0741	0801	0821
Bideford Quay (Stop C)	Arr	0623	0658	0737	0752	0812
Bideford Quay (Stop C)	Dep	0625	0700	0739	0754	0814
Northam Swimming Pool			0747			0843
Appledore Seagate Hotel			0753			0849
Northam Square	0632	0708		0802	0822	0
Westward Ho! Swanswood Gardens	0637	0713		0807	0827	0



Why we need better transport



MONDAYS TO FRIDAYS except Bank Holidays

	21	21	21	21	21A	21
Appledore Seagate Hotel				0700		
Westward Ho! Swanswood Gardens			0605	0637		0715
Westward Ho! Car Park	Arr		0608	0640		0716
Westward Ho! Car Park	Dep		0608	0643		0728
Northam Memorial			0616	0651	0709	0739
Bideford Quay (Stop B)	Arr		0622	0657	0717	0747
Bideford Quay (Stop B)	Dep	0515	0545	0625	0700	0720 0750
Instow Marine Parade		0523	0553	0633	0708	0728 0758
Fremington New Inn		0532	0602	0642	0715	0738 0808
Bickington Garage		0536	0606	0646	0723	0743 0813
Opp Barnstaple Railway Station		0543	0613	0653	0731	0751 0821
Barnstaple Bus Station		0548	0618	0658	0744	0804 0834



Outward Barnstaple to Exeter St Davids

Mon 3 Mar 2025

No earlier trains- see previous day.

Dep	Arr	Chg	Dur	Single	
06:25	07:30	0	1h 5m	£8.20	①
07:22	08:35	0	1h 13m	£8.20	①
08:35	09:43	0	1h 8m	£8.20	①
09:35	10:41	0	1h 6m	£8.20	①



The Solution?

- **Better Rail and Bus Services including joined up transportation options**
- **Stakeholder inclusion when developing timetables.**